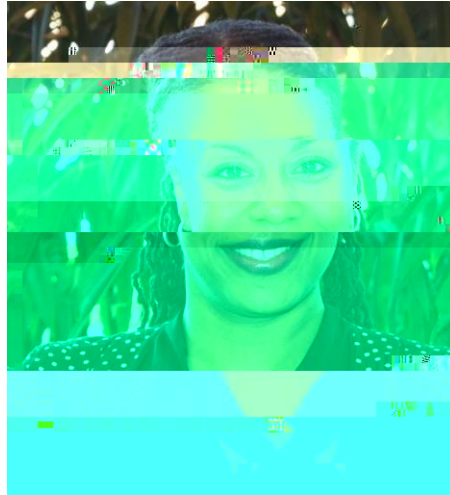


## SHLI Deputy Director Dr. Kisha Holden Joins GE-NMF Advisory Board



SHLI Deputy Director [Dr. Kisha Holden](#) has been appointed as a member to the board of the [GE Foundation-National Medical Federation \(NMF\) Primary Care Leadership Program \(PCLP\)](#). Since its inception in 2012, more than 300 medical, nursing and physician assistant students have participated in the program. The program is a leadership curriculum (LCC) throughout the country. With the support of the GE Foundation, NMF is developing a leadership curriculum for primary care.